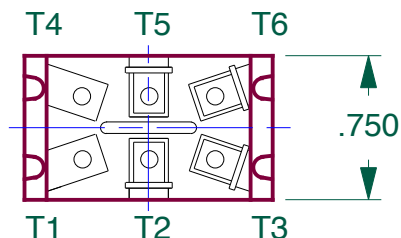
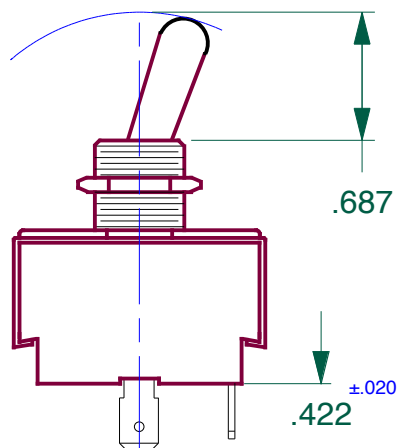


DO NOT SCALE DRAWING WORK TO FIGURE

DWG NO.		6GK5B-73	REV.
LET	REVISIONS	DATE	

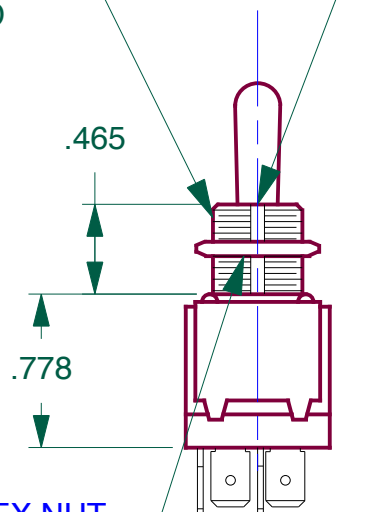
POS 1 POS 2 POS 3



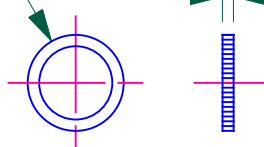
15/32-32NS-2
THREAD

.072 WD X .038 DP
KEYWAY

9/16 HEX NUT



.562 DIA



RING NUT

RATING: UL & CSA

10 AMP 250VAC
15 AMP 125VAC
3/4 HP 250VAC

OPERATES:

POSITIONS OF TOGGLE

<u>POS 1</u>	<u>POS 2</u>	<u>POS 3</u>
(ON)	NONE	OFF
T2 - 3		
T5 - 6		

NOTES:

- 1- KEYWAY INDICATES DOWN POSITION
- 2- TOGGLE, BUSHING & RING NUT ARE NICKLE PLATED BRASS

DIMENSIONS SUBJECT TO CHANGE WITHOUT NOTICE

FINISH

CARLINGSWITCH, INC.
PLAINVILLE, CT

PROPIETARY NOTE:

NOTICE TO ALL PERSONS RECEIVING THIS DRAWING. THIS DOCUMENT IS THE PROPERTY OF CARLINGSWITCH, INC. AND IS NOT TO BE DISCLOSED, REPRODUCED IN WHOLE OR IN PART OR USED FOR MANUFACTURING PURPOSES BY ANYONE WITHOUT THE CONSENT OF CARLINGSWITCH, INC.

UNSPECIFIED TOLERANCES

FRAC. $\pm 1/64$ X.XXX ± 0.015
ANGLES $\pm 1^\circ$

PROJECTIONS



DIMENSIONS
IN [mm]

TOOL NO.

REV

DR BY

KRAMARZ

DATE

1-4-11

CHK BY

DATE

APPD BY

DATE

TITLE

G SERIES
DOUBLE POLE

SIZE

A

DWG NO.

6GK5B-73

REV.

USED ON

SCALE:

NONE

SHT

1

OF

1